

Unser Standort heißt Braunschweig.
Unser Arbeitsplatz Europa.

www.wandt.de



COMPANY ABSTRACT

Wandt Spedition Transportberatung GmbH

Hansestrasse 47 a/c
38112 Braunschweig
Germany

Wandt Spedition Transportberatung GmbH is a middle-sized owner-managed enterprise.

- Foundation of enterprise on February 6th, 1939 by Adalbert Wandt.
- New beginning after 1947.
- Extension of business with intercity traffic, transport of bulk goods and storage within the sixties.
- Entrance in company of sons Adalbert (1973) and Gerhard Wandt (1976)
- Assumption of management by both sons in 1983
- Entrance of Aline Marleen Wandt (Dipl. Kffr.) in 2007 and Anthony Wandt (M.A.) in 2009



Company facts



- Staff: 170
- Store and handling area 15 000 m²
- Fleet size: 60 heavy commercial trucks
- Trailer and Boxes: 170
- Sectors: beverage industry, consumer goods, automotives, electrics, packaging
- IT infrastructure: WMS, BNS, several interfaces
- Turnover 2012: 16.7 Mio. €
- Shipments 2012: 55,000

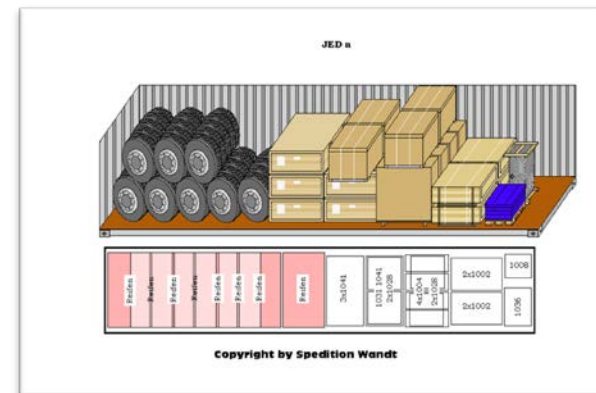


Solving the logistical problems of small to medium-sized companies provides a particular challenge. With our services in the area of logistic we more than meet these diverse demands. Total commitment and an extensive and highly efficient network help us to offer individual solutions for the multifaceted challenges. The focus is always on effective, practical and application-oriented solutions.






- packaging
- sequencing
- picking
- storing
- handling
- temporary-employment
agency work
- containerise

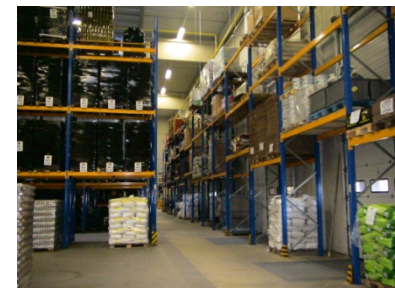


- Since 2005 CKD-Completely Knocked Down for MAN Nutzfahrzeug AG
 - Over **10.000** stuffed containers
 - Over 10 different destinations
 - Standardized Loading Schedules for container stuffing
 - Procurement transports
 - Handling tests



Excmample

	Wentronic www.wentronic.de Product: Unloading container
	SVG www.svg.de Product: Storing, handling
	Flechtorfer Mühle www.flemu.de Product: Picking, handling, storing
	Symrise www.symrise.com Product: Handling, storing, containerise
	Heimbs www.heimbs.com Product: Procurement transport, Unloading raw coffee (temporary-employment)



For us, transportation means more than simply covering the space from one point to another – it is a tradition. With continuing passion and technical know-how we offer a variety of possibilities for intelligent mobility concerning the goods of our customers. The use of our own resources and responsible personnel provide the base for our authentic service as well as being the core of our company identity.

- less & full truck load
- system transport
- piece goods network access
- forwarding agent
- jit/jis transport
- transport consulting



Example

	<p>Volkswagen www.volkswagen.de Product: System transport, less & full truck load, Jit/Jis transport</p>
	<p>Dr. Oetker www.oetker.com Product: Less & full truck load</p>
	<p>Solvis www.solvis.com Product: Distribution transport with special equipment</p>
	<p>Sonepar Nord/ Ost www.sonepar.de Product: System transport</p>
	<p>Oettinger Brauerei www.oettinger-bier.de Product: Less & full truck load</p>
	<p>Deutscher Paket Dienst (DPD) www.dpd.com Product: System transport</p>



In order to guarantee a quick exchange of goods in international trade, a smooth flow of goods and fast customs clearance are compulsive prerequisites. Due to having strong partners in international transport and due to our many years of experience working with custom authorities, we have the right tools to quickly and successfully execute these requirements for our customers.

- worldwide transport organization
- import/export registration
- editing of refund claims & tax assessments
- creation of certificates of origin (CCI) & movement certificates
- container service



Example



MAN Nutzfahrzeug AG www.man.eu

Product:
Conatiner service, barge transport



Solvis www.solvis.com

Product:
transport organization Switzerland



Ball www.ball.com

Product:
transport organization France



Streiff und Helmold www.streiff.de

Product:
import/export registration

